

# Automatic detector PRO CL-200

## Installation of the new update version

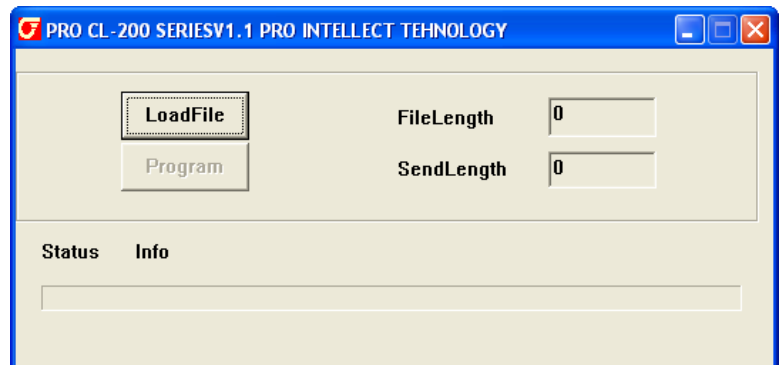
### Attention!

**Close all programs and applications on the PC before installation of the new update version**

1. Connect the cable to the detector and to COM-port of your PC. (You can use a detector cable of PRO-310A MULTI; also the connecting cable is included in most cases into the detector complete set)
2. Press the button «C» and keeping it switch the detector on. There will be dotted lines on the detector's display - - - -, now detector is in a mode of update installation.
3. Start the program by the file «PRO CL-200 Program.exe»



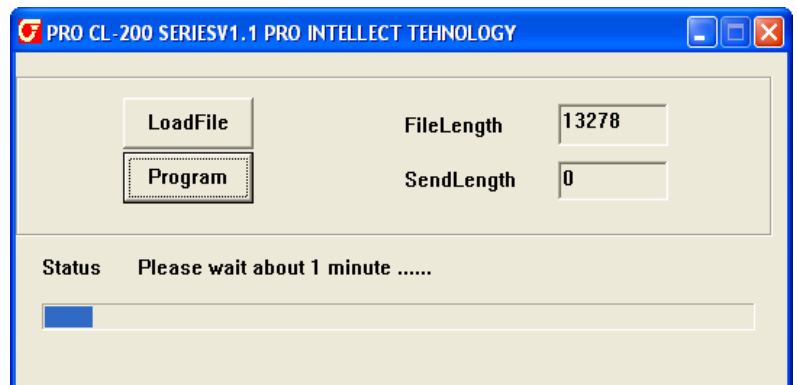
4. There will be a following menu on the PC display:



5. Press the button «**LoadFile**» and choose the program installation file

«CL200E\_C11-EURO (2011-01-11)»

6. Press the button «**Program**», in a few seconds there will be a blue line in the bottom of the screen (see a picture below), which indicates the installation program started. If the blue line doesn't appear in the bottom of the screen, repeat steps from step 1.



7. If the program installation was done properly, then there will be an inscription «Program Download Succeed!» (see picture on the right). Detector will reset automatically.

Close this window and disconnect the detector from the PC.

The detector is ready for use.

